



# Energy Efficiency Training

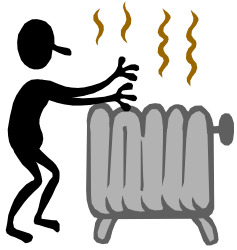
## Module 1 Training energy auditing methodology

**Knowledge Services**

**Global Green Growth Institute**

**Nov. 24, 2015**

# Power, Usage and Energy



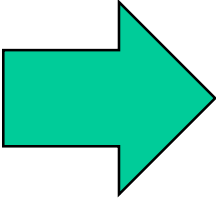
HEAT



MONEY



POLLUTION



Bulb rating

ON

Time

Meter

POWER



USE



ENERGY

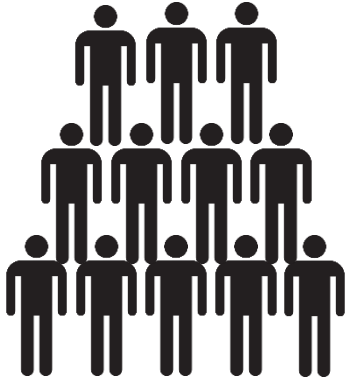
100W

10h

1000Wh  
1kWh



# Demand for 1 year



Average  
Consumption

Households  
Customers

Duration

Consumption

ENERGY



NUMBER



PERIOD



ENERGY

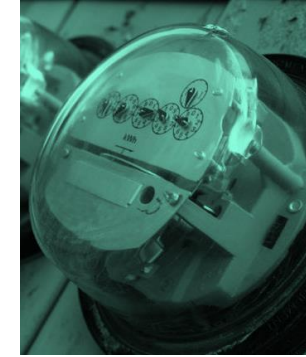
1kWh/day/HH

10,000 HH

365 days/year

3,650,000  
kWh/year

# Customer profiles



**Average  
Consumption**

**Urban Households**  
**Rural Households**

**Average  
Consumption**

**ENERGY**

**NUMBER**

**ENERGY**

**4 kWh/day/HH**

**13,000 HH**  
**5,000 HH**

**1.2 kWh/day/HH**

# Projections - Number of customers



2015



Urban Households  
Rural Households

NUMBER

13,000 HH  
5,000 HH

2020

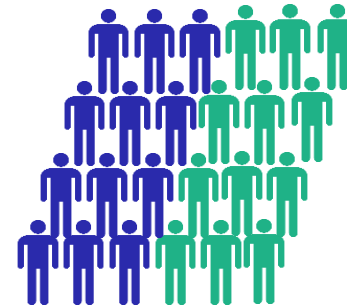


Urban Households  
Rural Households

NUMBER

16,000 HH  
12,000 HH

2025

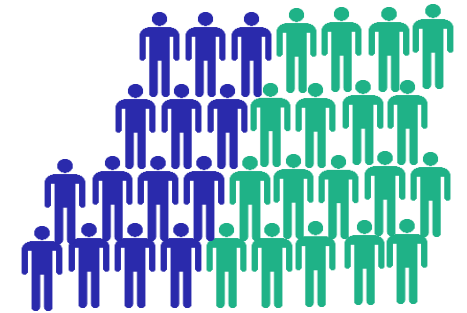


Urban Households  
Rural Households

NUMBER

21,000 HH  
20,000 HH

2030



Urban Households  
Rural Households

NUMBER

26,000 HH  
33,000 HH

# Projections – Consumption per capita



**2015**  
kWh/day/HH

**2020**  
kWh/day/HH

**2025**  
kWh/day/HH

**2030**  
kWh/day/HH

**4**

**3.6**

**3.3**

**3.3**

**1.2**

**1**

**1.1**

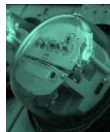
**1.3**



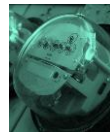
# Projections – Compute BAU scenario



2015



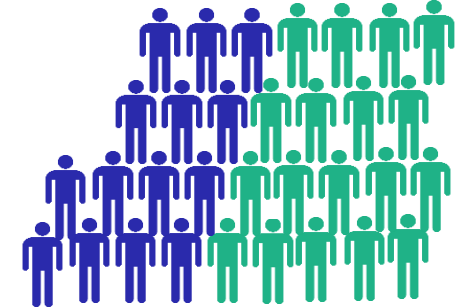
2020



2025



2030





**Bulb rating**

**POWER**

**10W**



**Time**

**USE**

**10h**



**Meter**

**ENERGY**

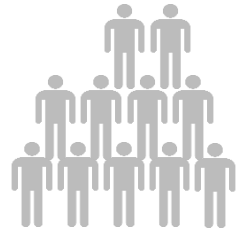
**100Wh**  
**0.1kWh**



# Projections – Adoption & Savings



**2015**

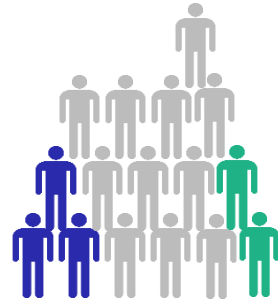


**0%**

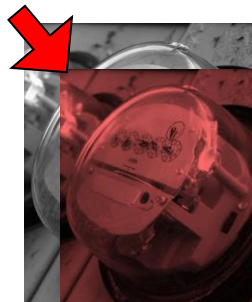


**0%**

**2020**

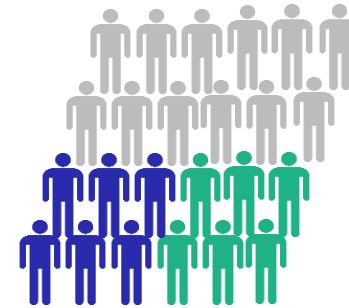


**30%**

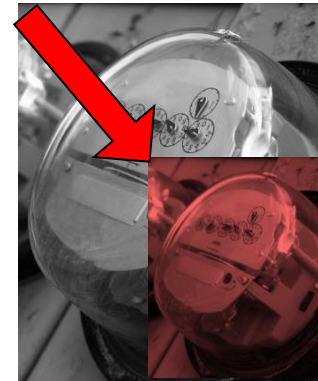


**-27%**

**2025**

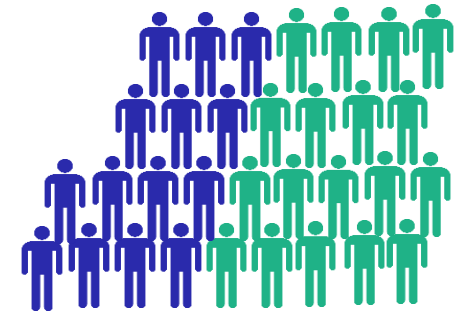


**50%**



**-45%**

**2030**

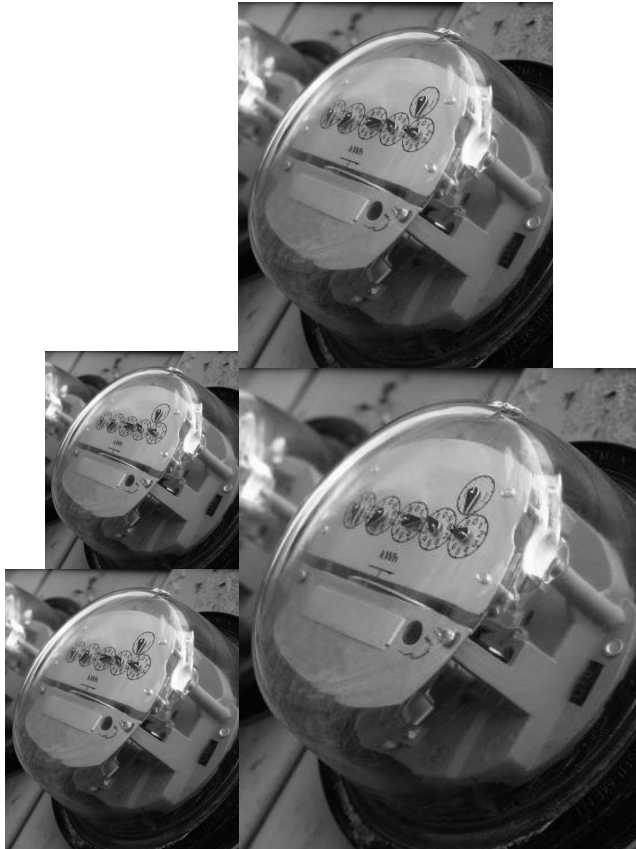


**100%**

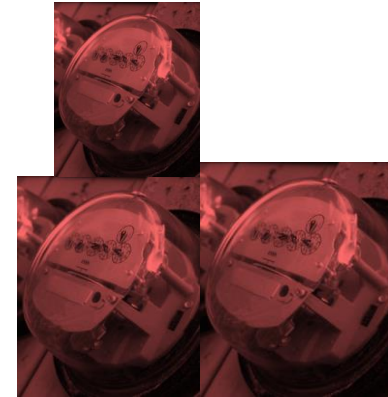
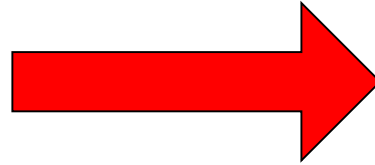


**-90%**

# Targets



**-45%**



# Examples – Introduction of efficient refrigerators



## 1. Number of electrified households in 2015

- a. *Urban*
- b. *Rural*

## 2. Total number of households with refrigerator in 2015

## 3. Total electricity consumption for refrigerator in 2015

## 4. Number of electrified households in 2030

- a. *Urban*
- b. *Rural*

## 5. Total number of households refrigerator in 2030

## 3. Total electricity consumption for refrigerator in 2030

- a. *If non-efficient only (BAU)*
- b. *Adoption of EE labelled*

	Urban	Rural
Households (2015 est.)	14,726	43,097
Population growth (annually)	+4%	+3%
Grid electrification (2015 est.)	86%	12%
Grid electrification (2030 target)	100%	50%
Households with refrigerators	60%	10%

	Non-efficient	EE labelled
Refrigerator annual consumption	550 Wh	250Wh
Technology adoption (2015 est.)	100%	0%
Technology adoption (2030 target)	0%	100%